



EVENITY® is used to treat osteoporosis in women after menopause who are at high risk of fracture (broken bone).

Please refer to the Patient Medication Information leaflet in your EVENITY package for complete safety information.

Injection instructions

How to take EVENITY

EVENITY is administered as two injections once every month for one year. EVENITY is injected under your skin (subcutaneous) with a prefilled syringe. Administration should be performed by an individual who has been trained to administer EVENITY.



Use both syringes in the carton for one full dose.

Storing the EVENITY prefilled syringes:

- Keep out of the reach of children.
- Keep in the original carton to protect from light or physical damage.
- Syringes should be kept in the refrigerator at 2° to 8°C in the original carton.
- If needed, you may store the syringes at room temperature (up to 25°C) in the original carton

for up to 30 days. Throw away EVENITY that has been stored at room temperature after 30 days in an appropriate sharps container.

- **Do not** store the syringe in extreme heat or cold. For example, avoid storing it in your vehicle's glove box or trunk.
- **Do not** freeze.

Usual dose

The usual once-monthly dose is given as **two consecutive injections**, using **two prefilled syringes**. The total monthly dose is 210 mg (105 mg per syringe). EVENITY is taken for one year.

During your treatment, you should take calcium and vitamin D as directed by your healthcare provider.

Read these instructions carefully before you start taking EVENITY and each time you get a refill.

Missed dose

If you missed a dose you should receive your next dose as soon as convenient. Schedule your next dose one month from the date of your last injection.

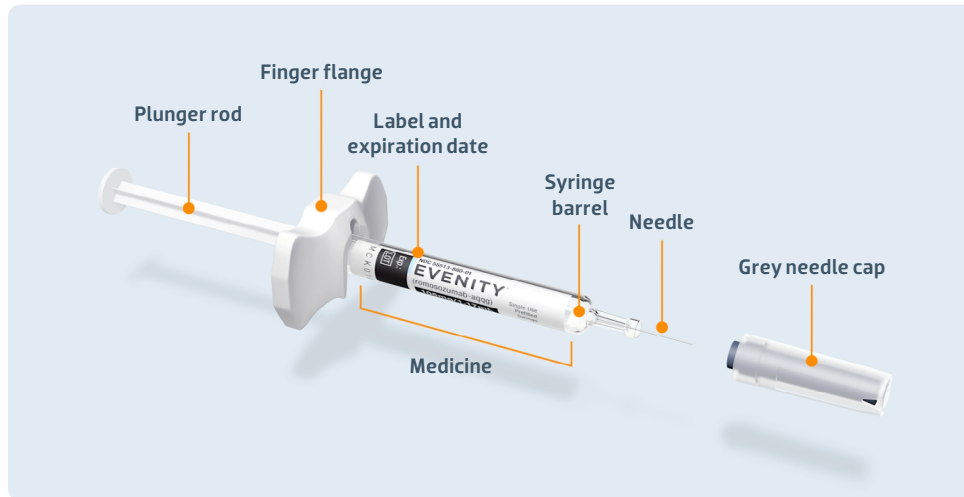
Overdose

There is no experience with overdosage with EVENITY. If you think you have taken too much EVENITY, contact your healthcare professional, hospital emergency department or regional poison control centre immediately, even if there are no symptoms.

Ask your healthcare provider if you have any questions on the use of EVENITY. You may also refer to the Patient Medication Information leaflet that comes with your EVENITY medication.

Before you inject

Each carton contains two prefilled syringes. To deliver a full dose, inject two 105 mg syringes, one after the other.



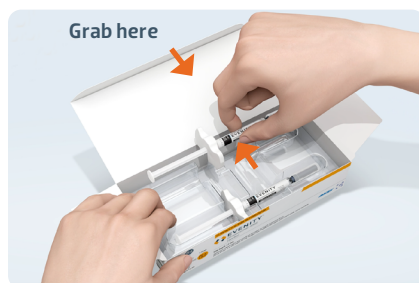
IMPORTANT:
Needle is inside.

Step 1: Prepare

To deliver a full dose, inject two 105 mg syringes, one after the other.

A Remove two syringes from the carton.

Place your finger or thumb on the edge of the tray to secure it while you remove each syringe. Grab the syringe barrel to remove the syringe from the tray.



IMPORTANT:
Always hold by the syringe barrel.

For safety reasons:

- **Do not** grasp the plunger rod.
- **Do not** grasp the grey needle cap.
- **Do not** remove the grey needle cap until you are ready to inject.
- **Do not** remove the finger flange. This is part of the syringe.

Leave the syringes at room temperature for at least 30 minutes before injecting for the patient's comfort.

- **Do not** put the syringes back in the refrigerator once they have reached room temperature.
- **Do not** try to warm the syringe by using a heat source such as hot water or microwave.
- **Do not** leave the syringes in direct sunlight.
- **Do not** shake the syringes.

B Inspect the syringe.

Make sure the medicine in the syringe is clear and colourless to light yellow.

Do not use if the solution is cloudy or discoloured or contains particles.

Do not use the syringe if any part appears cracked or broken.

Do not use the syringe if the grey needle cap is missing or not securely attached.

Do not use the syringe if the expiration date printed on the label has passed.

Do not use a syringe if it has been dropped on a hard surface. Part of the syringe may be broken even if you cannot see the break.

In all cases, use a new syringe and call Amgen Medical Information at 1-866-502-6436.

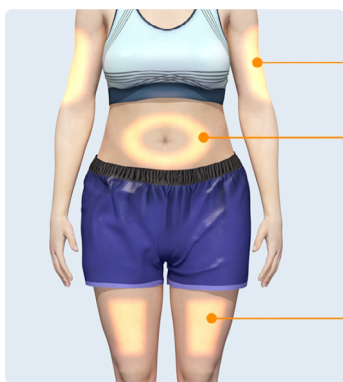
C Gather all materials needed for the injection.

Wash your hands thoroughly with soap and water.

On a clean, well-lit work surface, place the:

- Two syringes
- Two alcohol wipes
- Two cotton balls or two gauze pads
- Two adhesive bandages
- Sharps disposal container

D Prepare and clean two injection sites, one for each of the two injections.



Upper arm

Stomach area
(abdomen)

Thigh

You can use:

- The thigh
- Stomach area (abdomen), except for a two-inch (five centimetres) area right around the navel
- Outer area of the upper arm



Clean the injection sites with alcohol wipes and let the skin dry.

- **Do not** touch these areas again before injecting.
- Choose a different site each time you give an injection. If you want to use the same injection site, make sure it is not the same spot on the injection site you used for the previous injection.
- **Do not** inject into areas where the skin is tender, bruised, red, or hard.
- Avoid injecting directly into raised, thick, red, or scaly skin patch or lesion, or areas with scars or stretch marks.

Step 2: Get ready

- E** Choose the first syringe. Pull the grey needle cap straight off and away from the body when you are ready to inject.



It is normal to see a drop of liquid at the end of the needle.

- **Do not** twist or bend the grey needle cap.
- **Do not** put the grey needle cap back onto the syringe.
- **Do not** remove the grey needle cap from the syringe until you are ready to inject.

IMPORTANT: Throw the needle cap into a sharps disposal container.

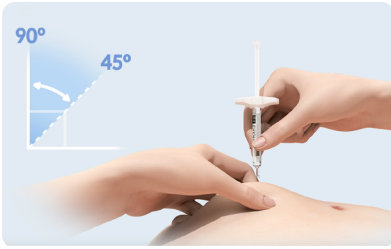
- F** Pinch the injection site to create a firm surface.



Pinch the skin firmly between your thumb and fingers, creating an area about two inches wide (five centimetres).

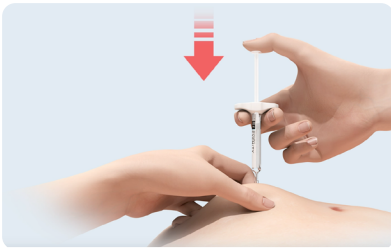
IMPORTANT: Keep the skin pinched while injecting.

Step 3: Inject

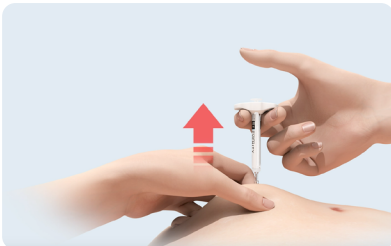


- G** Hold the pinch. With the grey needle cap off, insert the syringe into the skin at 45 to 90 degrees.

Do not place your finger on the plunger rod while inserting the needle.



- H** Using slow and constant pressure, push the plunger rod all the way down until it stops moving.



- I** When done, release your thumb and gently lift the syringe off of the skin.

Note: After you remove the syringe from the skin, the syringe barrel should be empty.

IMPORTANT: If it looks like the medicine is still in the syringe barrel, this means you have not delivered a full injection.

Step 4: Finish



J Discard the used syringe and the grey cap.

Put the used syringe in a sharps disposal container right away after use. **Do not** throw away (dispose of) the syringe in your household trash.

If you do not have a sharps disposal container, you may use a container that is:

- made of a heavy-duty plastic
- can be closed with a tight-fitting, puncture-resistant lid, without sharps being able to come out
- upright and stable during use
- leak-resistant
- properly labeled to warn of hazardous waste inside the container.

When your sharps disposal container is almost full, you will need to follow your community guidelines for the right way to dispose of your sharps disposal container. There may be local laws about how you should throw away used needles and syringes.

- **Do not** reuse the syringe.
- **Do not** recycle the syringe or sharps disposal container or throw them into household trash.

IMPORTANT: Always keep the sharps disposal container out of the reach of children.

K Examine the injection site.

If there is blood, press a cotton ball or gauze pad on the injection site. **Do not** rub the injection site. Apply an adhesive bandage if needed.

L Repeat all steps with the second syringe to inject the full dose.

Questions?

To speak with the **ProVital[®] Patient Support Program**, call **1-877-PRO-1002 (1-877-776-1002)** toll-free from 8:00 a.m. to 8:00 p.m. EST, Monday to Friday, or visit the program website at **www.EVENITY.ca**. You will need the EVENITY DIN to access the website. The **EVENITY DIN** is **02489597**.